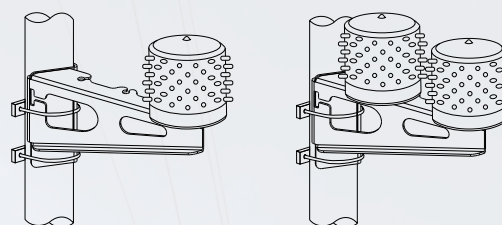




Introducing our cutting-edge Low Intensity Type B Aviation Obstruction Light – the ideal choice for aviation safety. Utilizing high-brightness LED technology, it ensures optimal visibility and energy-efficiency. Compliant with ICAO and CAAM regulations, this versatile light suits structures under 45 meters above ground level. With its lightweight design, installation is a breeze. Trust in our reliable aviation warning light for round-the-clock protection of lives and assets.



## Features



## Compliance



## Application



## Specification

Compliance	ICAO Annex 14 CAAM ASD 404 & CAD 14 FAA L-810
Light Type	Low Intensity Type B
Light Source	72 LED Cluster
Lifespan	≥ 100,000h
Effective Intensity	42 Cd
Light Color	Red
Horizontal Beam	360°
Vertical Beam	>10°
Operation Mode	Steady Burning (Fixed)
Operating Temperature	-10°C ~ +80°C
IP Rate	IP67
Material	UV Resist Epoxy (Body) Stainless Steel (Mounting)

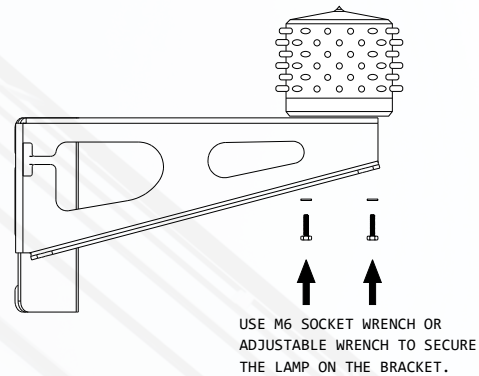
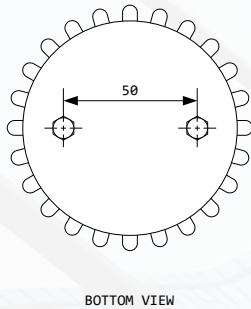
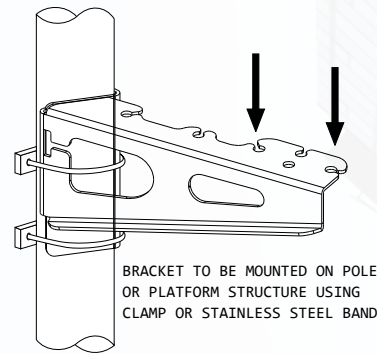
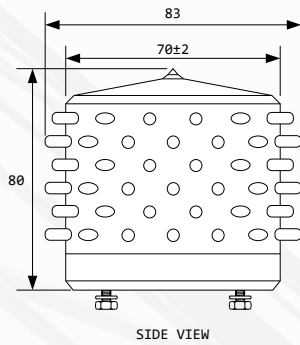
Dimension (L*W*H)	83x83x80mm
Weight	0.5kg (Single Model) 1.0kg (Twin Model) 0.4kg (Bracket) 9.0kg (WP Control Panel 0+1)
Rain Test	130mm/h
Wind Test	150km/h
Humidity Test	95% RH (+55°C for 72h)
Operational Test	1000h
Leakage Current Test	< 10μA

Direct Current		
Direct Current <b>Li-3272-S-240</b>		
Low Intensity		
Type	Min. Intensity	Max. Intensity
A	10 Cd (b)	NA
B	32 Cd (b)	NA
		LED Quantity
		Sensor (Photo Sensor)
		Operating Voltage

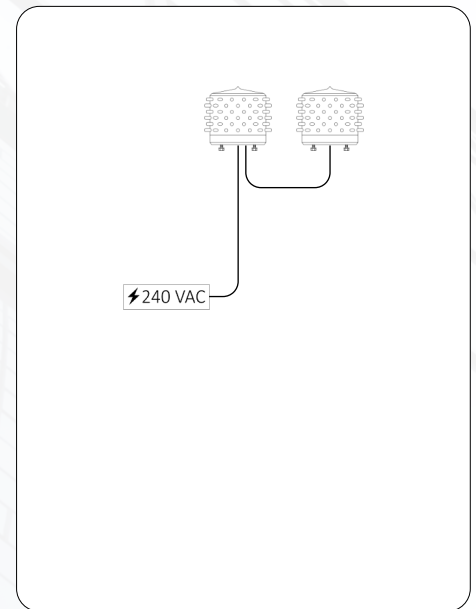
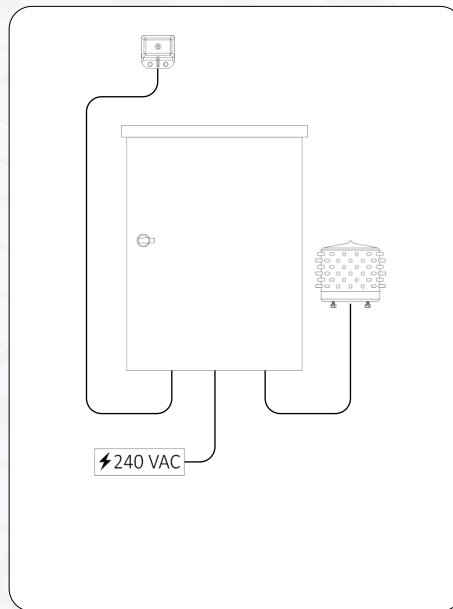
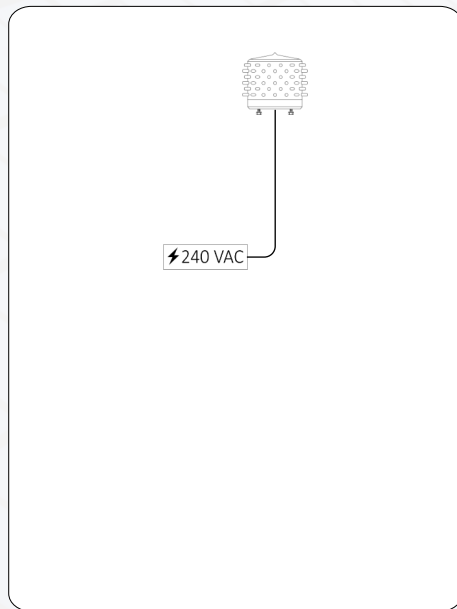
\*refer table below

Model	Configuration	Technical Features	Operating Voltage	Current	Power	Colour (Signal)	Operation & Brightness
Li-3272 (Single)		Basic (-) Sensor (S)	48 VDC (Opt. Control Panel) 54 VDC (Opt. Control Panel)	90 mA 80 mA 38 mA 40 mA	4.3 W 4.3 W 8.4 W 9.6 W	Red Colour (Fixed)	Night - 42 Cd (Standard 32 Cd)
Li-3272 (Twin)	Twin Main-Stand By (T-MS) Twin Main-Main (T-MM)	Sensor Alarm (SA)	220 VDC 240 VAC	*T-MM Configuration Current x 2	*T-MM Configuration Power x 2		

\*Li-3272-P model comes with Pipe for the Philippines market, operating voltage available is 220 VAC



## General Arrangement



### Recommended Installation For Lighting Protection

For lightning protection, the light should be installed lower and near to the lightning arrestor / air terminal. Preferably within 1m from the arrestor and no closer than 0.5m from it. This is to ensure that the light are within the lightning protection zone (90 inverted cone) of the arrestor.

