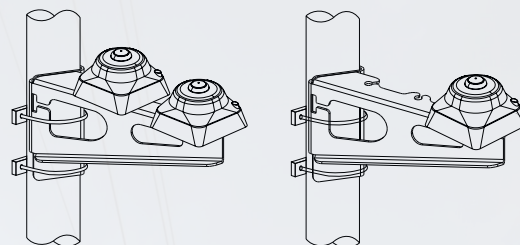


## Low Intensity (Li-3201 Series Model)



Introducing our innovative Low Intensity Type B Aviation Obstruction Light with single LED technology. It exceeds compliance standards while maintaining output. High brightness, low power consumption, and full ICAO and CAAM compliance ensure efficiency. Ideal for structures under 45 meters, its lightweight design allows easy installation. Elevate aviation safety with our future-ready solution. Trust in the reliability and visibility of our advanced Low Intensity Type B model – the ultimate warning light.



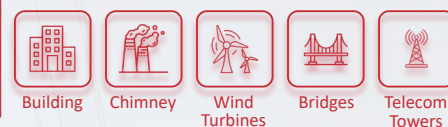
### Features



### Compliance



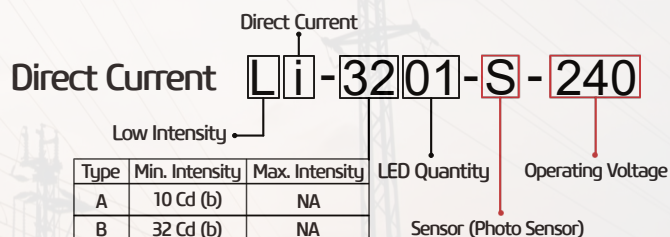
### Application



### Specification

Compliance	ICAO Annex 14 CAAM ASD 404 & CAD 14 FAA L-810
Light Type	Low Intensity Type B
Light Source	Single LED
Lifespan	≥ 100,000h
Effective Intensity	42 Cd (Night)
Light Color	Red
Horizontal Beam	360°
Vertical Beam	>10°
Operation Mode	Steady Burning (Fixed)
Operating Temperature	-10°C ~ +80°C
IP Rate	IP67
Material	Automotive Grade PMMA (Cover) UV Resist Epoxy & Stainless Steel (Base)

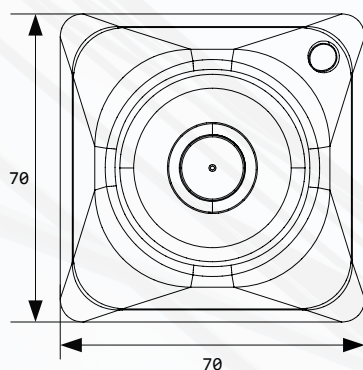
Dimension (L*W*H)	70x70x61mm
Weight	0.3kg (Single Model) 0.7kg (Twin Model) 0.4kg (Bracket) 9.0kg (WP Control Panel 0+1)
Rain Test	130mm/h
Wind Test	150km/h
Humidity Test	95% RH (+55°C for 72h)
Operational Test	1000h
Leakage Current Test	< 10μA



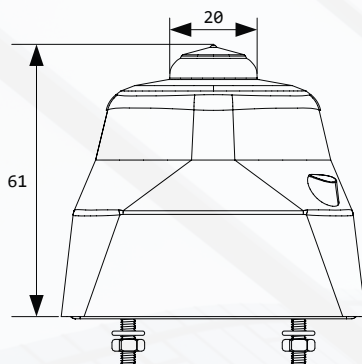
\*refer table below

Model	Configuration	Technical Features	Operating Voltage	Current	Power	Colour (Signal)	Operation & Brightness
Li-3201 (Single)		Basic (-) Sensor (S) Sensor Alarm (SA)	48 VDC (Opt. Control Panel) 220 VDC 240 VAC	510 mA 506 mA 506 mA  *T-MM Configuration Current x 2	2.4 W 2.3 W 2.2 W  *T-MM Configuration Power x 2	Red Colour (Fixed)	Night - 42 Cd (Standard 32 Cd)
Li-3201 (Twin)	Twin Main-Stand By (T-MM) Twin Main-Main (T-MM)						

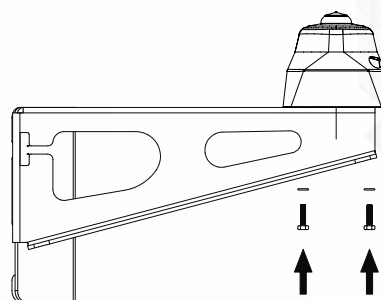
\*Li-3201-P model comes with Pipe for the Philippines market, operating voltage available is 220 VAC (TBA soon)



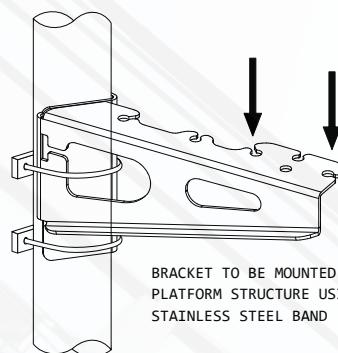
TOP VIEW



SIDE VIEW

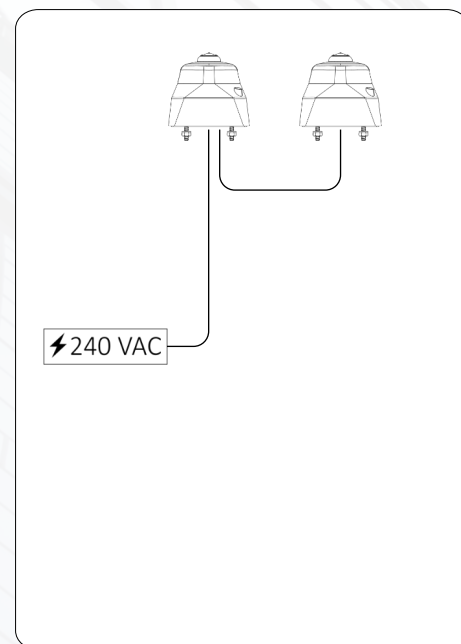
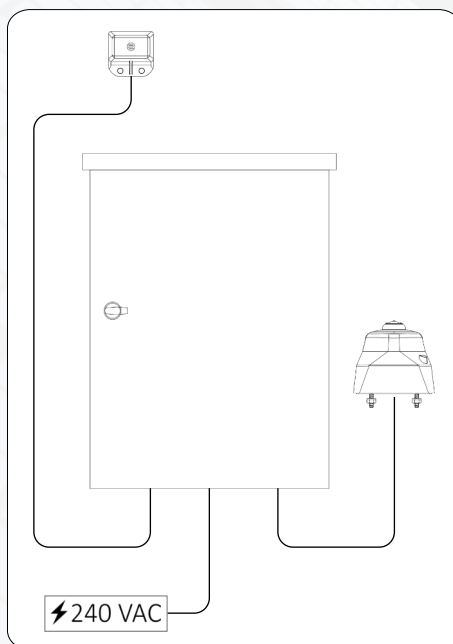
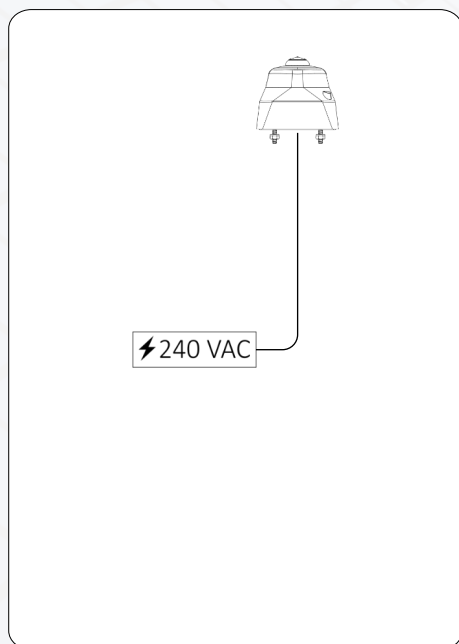


USE M6 SOCKET WRENCH OR ADJUSTABLE WRENCH TO SECURE THE LAMP ON THE BRACKET.



BRACKET TO BE MOUNTED ON POLE OR PLATFORM STRUCTURE USING CLAMP OR STAINLESS STEEL BAND

## General Arrangement



### Recommended Installation For Lighting Protection

For lightning protection, the light should be installed lower and near to the lightning arrestor / air terminal. Preferably within 1m from the arrestor and no closer than 0.5m from it. This is to ensure that the light are within the lightning protection zone (90 inverted cone) of the arrestor.

