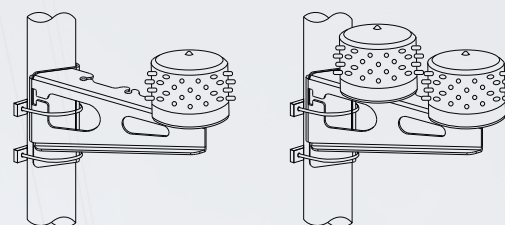


Low Intensity (Li-1016A Series Model)



Introducing our Low Intensity Type A Aviation Obstruction Light – ideal for less extensive structures below 45 meters above ground level. This aviation warning light ensures optimal visibility and energy efficiency with advanced LED technology. Compliant with ICAO and CAAM, it guarantees reliable performance. Its lightweight design enables effortless installation, providing essential safety for lower height structures. Trust our Low Intensity Type A model for dependable warning lights, safeguarding aviation operations at night.



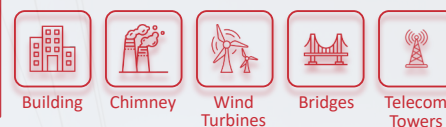
Features



Compliance



Application



Specification

Compliance	ICAO Annex 14 CAAM ASD 404 & CAD 14
Light Type	Low Intensity Type A
Light Source	48 LED Cluster
Lifespan	≥ 100,000h
Effective Intensity	25 Cd
Light Color	Red
Horizontal Beam	360°
Vertical Beam	>10°
Operation Mode	Steady Burning (Fixed)
Operating Temperature	-10°C ~ +80°C
IP Rate	IP67
Material	UV Resist Epoxy (Body) Stainless Steel (Mounting)

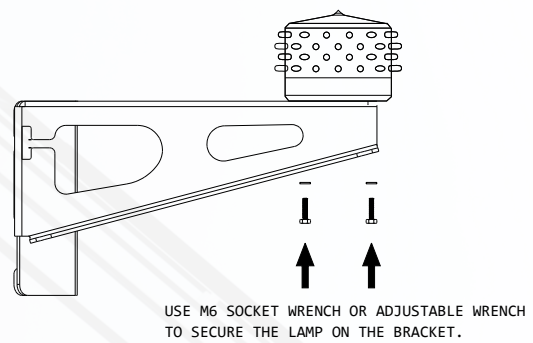
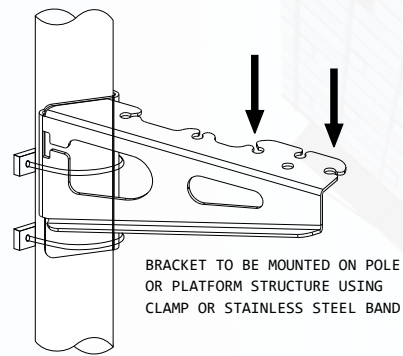
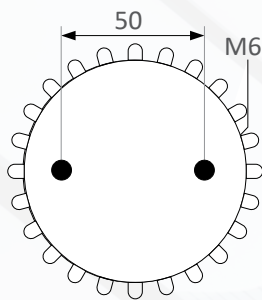
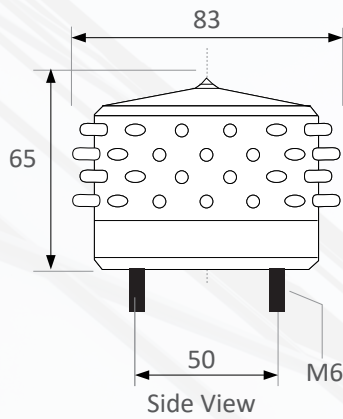
Dimension (L*W*H)	83x83x65mm
Weight	0.4kg (Single Model) 0.9kg (Twin Model) 0.4kg (Bracket) 9.0kg (WP Control Panel 0+1)
Rain Test	130mm/h
Wind Test	150km/h
Humidity Test	95% RH (+55°C for 72h)
Operational Test	1000h
Leakage Current Test	< 10µA

Direct Current			Advance	
Li-1016A-S-240				
Low Intensity			LED Quantity	
Type	Min. Intensity	Max. Intensity	Operating Voltage	
A	10 Cd (b)	NA	Sensor (Photo Sensor)	
B	32 Cd (b)	NA		

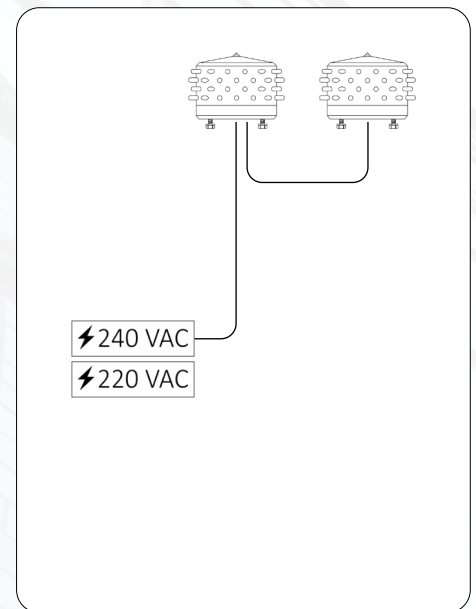
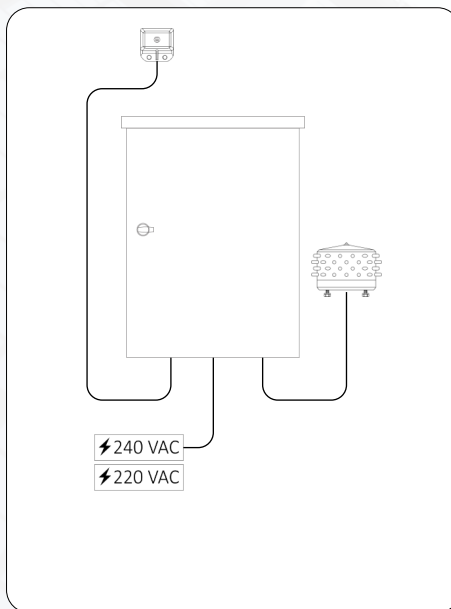
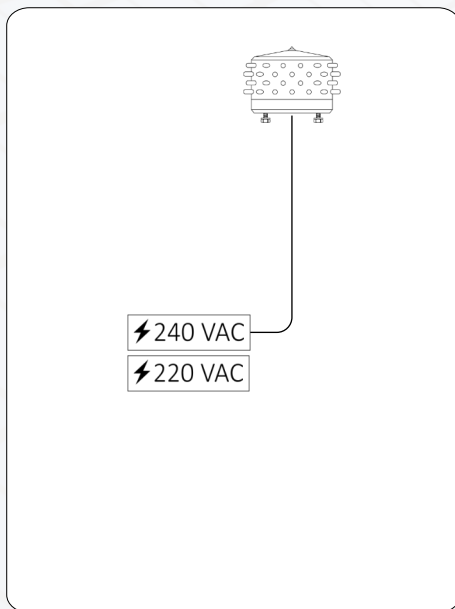
*refer table below

Model	Configuration	Technical Features	Operating Voltage	Current	Power	Colour (Signal)	Operation & Brightness
Li-1016A (Single)		Basic (-) Sensor (S) Sensor Alarm (SA)	48 VDC (Opt. Control Panel) 220 VDC 240 VAC	50 mA 25 mA 28 mA *T-MM Configuration Current x 2	3.0 W 5.5 W 6.7 W *T-MM Configuration Power x 2	Red Colour (Fixed)	Night - 25 Cd (Standard 10 Cd)
Li-1016A (Twin)	Twin Main-Stand By (T-MS) Twin Main-Main (T-MM)						

*Li-1016A-P model comes with Pipe for the Philippines market, operating voltage available is 220 VAC



General Arrangement



Recommended Installation For Lighting Protection

For lightning protection, the light should be installed lower and near to the lightning arrestor / air terminal. Preferably within 1m from the arrestor and no closer than 0.5m from it. This is to ensure that the light are within the lightning protection zone (90 inverted cone) of the arrestor.

